



An everyday office essential

DELL 22 MONITOR | E2216H



ESSENTIAL FEATURES

Discover the important monitor features you need to drive productivity everyday.



DEPENDABLE USABILITY

Count on our stringent quality standards that help ensure dependable performance helping minimize workforce downtime.



ECO-ELEGANT DESIGN

Eco-friendly chassis, made of more than 25% post-consumer recycled materials.



TRUSTED RELIABILITY

As the world's #1 monitor brand*, we take pride in our unyielding commitment to quality and the utmost satisfaction of our customers.

Affordable, reliable, eco-friendly



ESSENTIAL FEATURES

Screen performance: View your applications, spreadsheets and more on 21.5 inches of 1920x1080 Full HD clarity with 16.7 million colors.

Versatile connectivity: Compatible with both legacy and current PCs via VGA and DisplayPort connectivity.

Tilt at will: Work comfortably by tilting the monitor 5" forward or 21" backward.



DEPENDABLE USABILITY

Uncompromised testing: Rigorous development processes help ensure consistent, reliable performance in busy POS and office environments.

Convenient controls: Easily access buttons for power, brightness, contrast and customizable preset modes on the monitor's front panel.

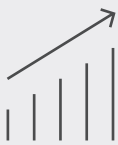
Mounting option: Create AIO-like simplicity in deployment by mounting a Dell Wyse thin client or Dell Optiplex Micro PC directly to available rear VESA mount area.



ECO-ELEGANT DESIGN

Designed with the environment in mind: BFR/PVC-free monitor (except external cables) with arsenic-free glass and mercury-free LED panel with more than 25% post consumer plastics in its chassis.

ENERGY STAR®, EPEAT® Gold¹ and TCO Certified: Meets all regulatory and environmental standards.



DELL DISPLAY MANAGER

More ways to multitask: Work conveniently across multiple screens and select from predefined templates with the **Easy Arrange** feature on Dell Display Manager software. Quickly tile and arrange your applications and get back to work faster with **Auto-restore**, a feature that remembers where you left off.

Easily optimize your view: Automode easily configures display settings for a great front of screen experience.

Manage your display inventory: Generate an asset management report to tag display ID and settings within your business environment.



THANK YOU FOR
MAKING DELL
MONITORS
#1 WORLDWIDE*

Minimize downtime: Your monitor comes with a 3-year Advanced Exchange Service³ so that if a replacement becomes necessary, it will be shipped to you the next business day during your 3-year Limited Hardware Warranty.⁴

Get a higher level of support: Upgrade to 24x7, in-region technical phone support from qualified engineers with Dell ProSupport option.⁵

Features & Technical Specifications

Monitor	Dell 22 Monitor – E2216H
Diagonal Viewing Size	54.61 cm (21.5 inches)
Active Display Area	
Horizontal	476.06 mm (18.74 inches)
Vertical	267.79 mm (10.54 inches)
Maximum Preset Resolution	Full HD 1920 x 1080 at 60 Hz
Aspect Ratio	16:9
Pixel Pitch	0.248 mm x 0.248 mm
Brightness	250 cd/m ² (typical)
Color Support	Color Gamut (typical): 85% ⁶ (CIE1976) Color Depth: 16.7 million colors
Contrast Ratio	1,000:1 (typical)
Viewing Angle	160° / 170°
Response Time	5 ms black-to-white (typical)
Panel Type	TN (active matrix –TFT LCD), anti-glare
Backlight Technology	LED
Optional Soundbar	AC511
Connectivity	
Connectors	VGA, DisplayPort 1.2
Design Features	
Adjustability	Tilt only (Typical: 5° forward or 21° backward)
Security	Security lock slot (security lock not included)
Flat Panel Mount Interface	VESA mounting support (wall mount sold separately) 100 mm x 100 mm
Power	
AC input voltage/frequency/current	100 to 240 VAC/50 or 60 Hz ± 3 Hz/1.0 A (typical)
Power Consumption (Operational)	18W (typical)
Power Consumption (ENERGY STAR [®])	18.2W
Power Consumption Stand by / Sleep	Less than 0.3 W
Dimensions (with stand)	
Height	396.7 mm (15.62 inches)
Width	512.2 mm (20.17 inches)
Depth	180 mm (7.09 inches)
Weight	
Weight (panel only – no stand)	2.84 kg (6.26 lb)
Weight (with stand)	3.63 kg (8.0 lb)
Shipping Weight	4.85 kg (10.69 lb)
Standard Service Plan	3 Years Advanced Exchange Service ³ & 3 Years Limited Hardware Warranty ⁴ ,
Optional Service Plan	Dell ProSupport ⁵
Environmental Compliance	ENERGY STAR [®] , EPEAT [®] Gold ¹ , TCO Certified Displays, CECP, China Energy Label, RoHS

What's in the box?

Components

- Monitor panel
- Stand (riser and base)
- VESA trim cover

Cables

- DisplayPort cable
- Power cable

Documentation

- Quick Setup Guide
- Safety and regulatory information
- Drivers and documentation media

Adjustability and connectivity

DELL 22 MONITOR | E2216H

Easily adjust the panel to your preferred viewing position.



Back view - Cable management slot



Tilt

Connectivity

Image enlarged and cropped to show detail



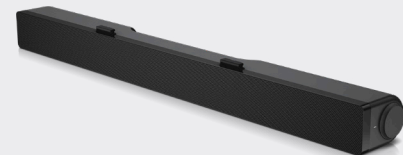
- 1 AC power
- 2 DisplayPort
- 3 VGA
- 4 Sound bar mounting slots

RECOMMENDED ACCESSORIES



DELL DOCKING STATION (USB 3.0) D3100

Connect to any PC to this USB 3.0 universal docking station and display Ultra HD 4K resolution.



DELL SOUNDBAR - AC511

Get stereo surround sound with the Dell soundbar. Snap it snugly onto the bottom of the monitor to enjoy high-quality audio.

* Dell monitors are #1 worldwide for 5 consecutive years (2013-2017)! Source: IDC Quarterly PC Monitor Tracker, Q1 2018.

1 EPEAT Gold registered in the U.S. EPEAT registration varies by country. See www.epeat.net for registration status by country.

3 Advanced Exchange: Dell will send you a replacement monitor the next business day in most cases, if deemed necessary after phone/online diagnosis. Shipping times may vary by location and for monitors 55" and above. Fee charged for failure to return defective unit. See dell.com/servicecontracts/global.

4 For a copy of the Limited Hardware Warranty, write to Dell USA LP, Attn: Warranties, One Dell Way, Round Rock, TX 78682 or see dell.com/warranty.

5 Availability varies, please visit www.dell.com/support for details.

6 Color gamut (typical) is based on CIE1976 (85%) and CIE1931 (72%) test standards.

Dell.com/monitors Product availability varies by country. Please contact your Dell representative for more information.

© 2018 Dell. All rights reserved.

Trademarks or trade names may be used in this document to refer to either the entities claiming the marks and names of their products. Dell disclaims proprietary interest in the marks and names of others. Reproduction in any manner whatsoever without express written permission from Dell is strictly forbidden.

